

## Mini-bioblitz Survey Instructions

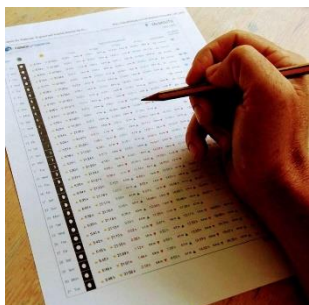
A Rock Pool Project Mini-bioblitz is simply looking for whatever you can find, within one of our survey sites. You can take photos of any interesting living things you choose and take as long as you like!

Mini-bioblitzes are mainly for fun but can highlight important new species records. For safety reasons we recommend you do not do your survey alone and you can work in a group of any size.



### Equipment needed:

- A camera or smartphone – ideally waterproof.
- Some kind of timer - e.g. watch, phone etc.
- Relevant identification material – a rock pool species guidebook, check out some of our suggestions [here](#).
- Small notepad & pen
- Footwear - coastal rocks can be sharp and/or slippery. So thick soles with good grips are recommended; wellies or old hiking boots are perfect. Old trainers are good too but rinse the salt off them afterwards.
- Clothing - prepare for the Great British weather.



### Before you go:

- Get a User ID and password by signing up [here](#).
- Choose a Rock Pool Project survey site from our [survey sites page](#) and download the individual site map. (Or contact us at least 72 hours before you plan to go. We will try to add a new survey site near you!)
- Check the weather forecast.
- Check the low tide time and aim to arrive at least 30 minutes beforehand if possible (we suggest [www.tides4fishing.com](http://www.tides4fishing.com).)

### At the beach:

- Check your site map and familiarise yourself the boundaries of our survey site. Make sure you stay within them when doing your mini-bioblitz.
- Carefully walk to the water's edge to begin your survey. Please be aware of the sea conditions and stay a safe distance away from the sea.
- Take a selfie! This will be added to your survey report as a 'cover'



### Start your Mini-bioblitz!

- Note the time and search within the survey site for any wildlife and photograph what you find. You can record as much or as little as you want, for as long as you want.
- If you have young children (or even if you don't), you may like to make use of our fun rock pool bingo cards!
- Try to submit your results within 24 hours via our [online system](#). Guidance for using our data submission is available [here](#). You will need at least one image for each species your group found.